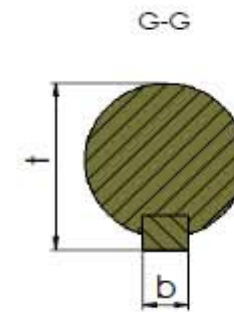
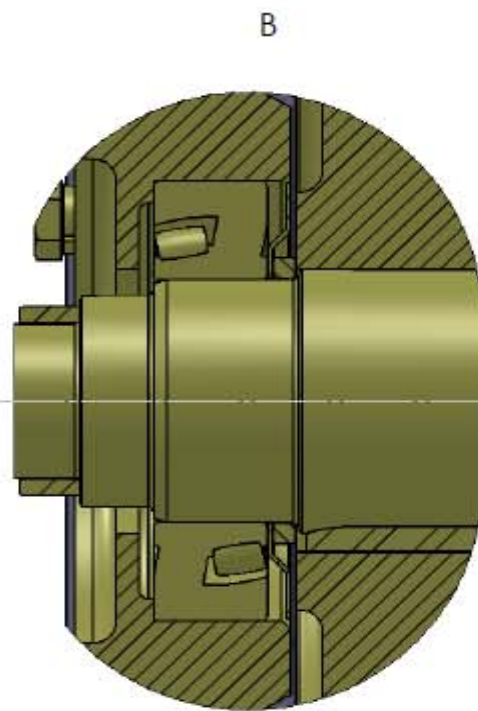
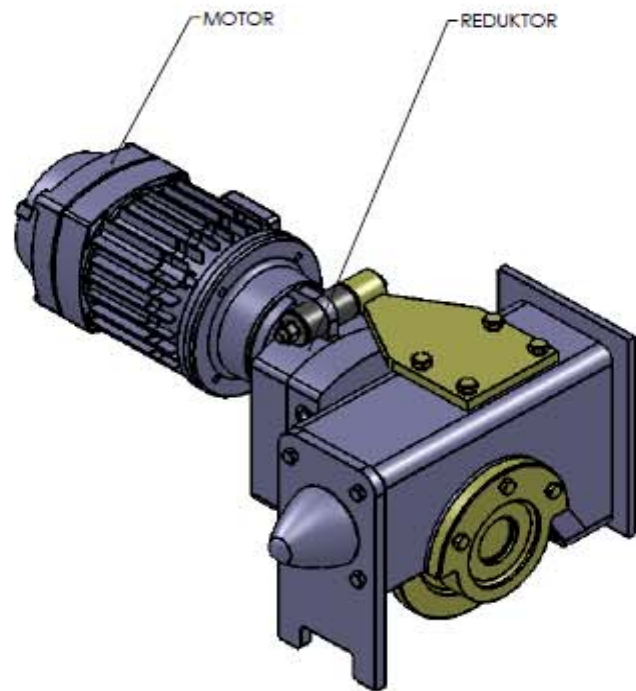
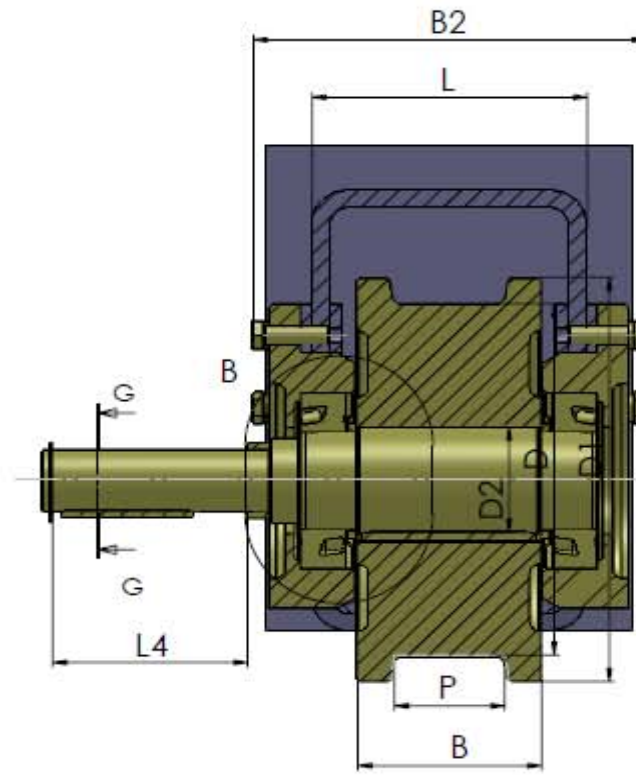
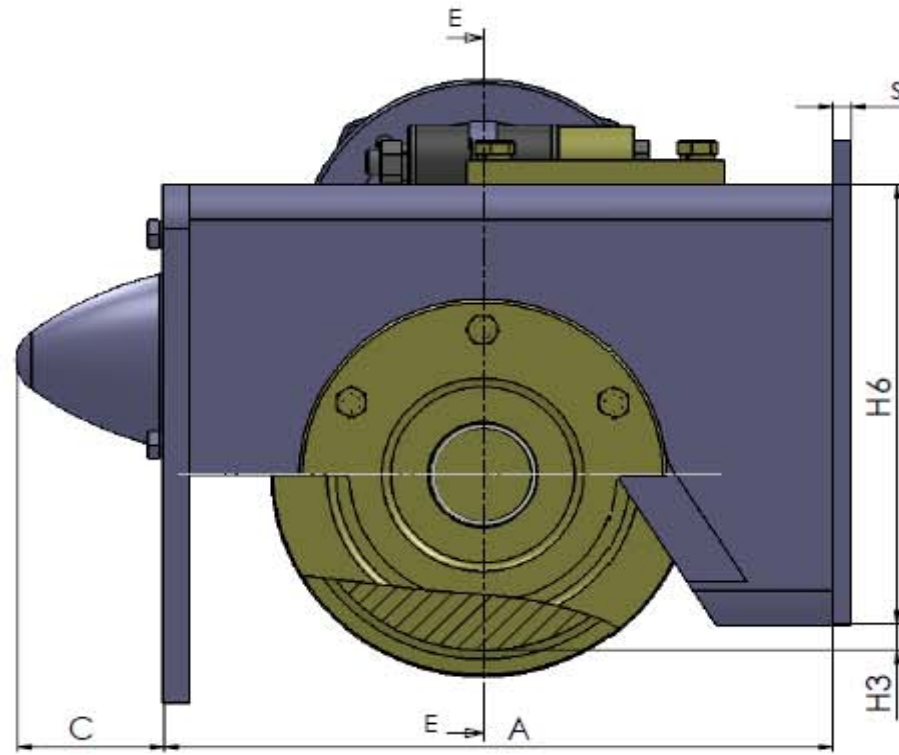
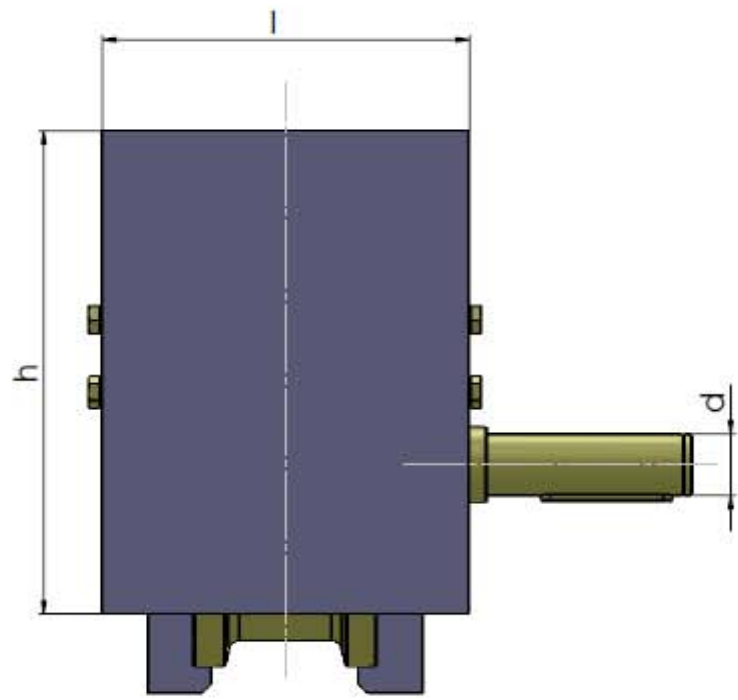


# CABEZALES



TIPO	D	D1	D2	P	B	A	L	L4	B2	H6	H3	C	l	h	s	d	b	t	Rmax [kg]	Rodamiento	motor	Reductor	Kg.sin motorred.
	[mm]																						
<b>BG125</b>	125	150	60	50	80	264	150	97	201	150	7,5	80	200	175	8	30	8	33	3640	6011	AK7-4; 6; 8/2	TP1160	38
<b>BG160</b>	160	190	60	60	90	289	150	97	205	200	15	80	200	225	8	30	8	33	5510	6211	AK80 ; AK80P	TP1160	48
<b>BG200</b>	200	230	60	60	100	364	150	106	205	250	15	80	200	275	10	35	10	38	8520	22211	AK90 ; AK80P	TP1200	78
<b>BG200</b>	200	230	60	60	100	364	150	118	205	250	15	80	200	275	10	40	12	43	8520	22211	AK90 ; AK80P	TP1250	
<b>BG250</b>	250	280	60	60	100	364	200	118	255	300	15	80	250	325	10	40	12	43	10800	22211	AK90P ; AK80P	TP1250	91
<b>BG315</b>	315	350	65	80	120	464	200	142	258	300	52	80	250	325	12	50	14	53.5	13680	22212	AK90P ; AK100	TP1315	144
<b>BG315*</b>	315	350	65	90	120	464	200	142	258	300	52	80	250	325	12	50	14	53.5	13680	22212	AK90P ; AK100	TP1315	
<b>BG400</b>	400	450	95	80	130	514	250	142	308	450	20	80	300	425	15	50	14	53.5	19800	22218	AK100 ; AK100P	TP1315	238
<b>BG400*</b>	400	450	95	90	130	514	250	142	308	450	20	80	300	425	15	50	14	53.5	19800	22218	AK100 ; AK100P	TP1315	
<b>BG400**</b>	400	450	95	100	130	514	250	142	308	450	20	80	300	425	15	50	14	53.5	19800	22218	AK100 ; AK100P	TP1315	

1) Tubo estructural tipo RHS; marca S355 J2H EN102.10-1 /St52-3N-DIN 17100/

2) Material de los rodillos tipo 41Cr4 DIN EN10083-1.

3) Tratamiento térmico de la superficie de la rodadura y las pestañas de los rodillos, profundidad 10 mm. HB=340...370, progresivo.